

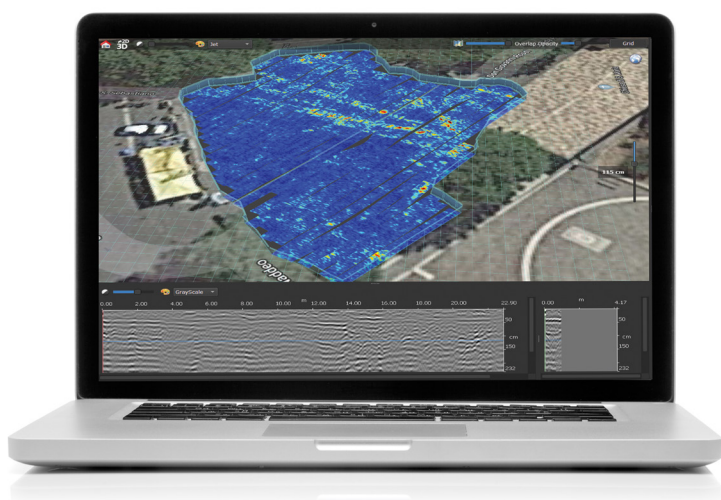


Time waste reduced with the new post-processing software
providing real time processing and visualisation

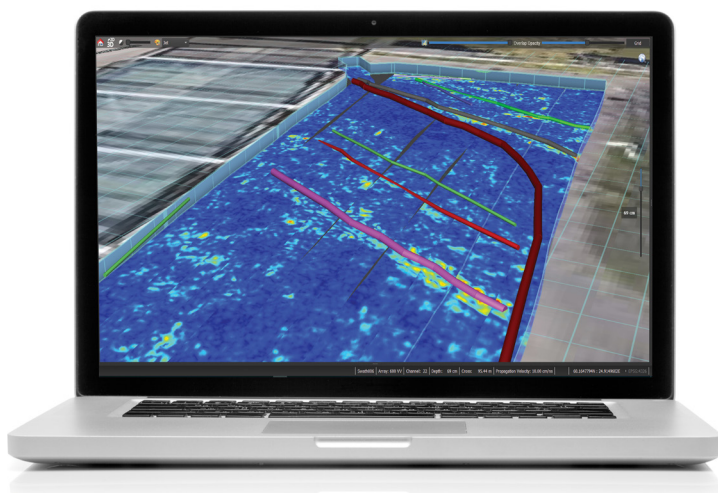
IQMAPS APPLICATIONS

IQMaps is a new post-processing software application for advanced GPR data analysis, which provides a fast interfacing between the user and the GPR data. Machine time has been reduced and, contemporarily, real-time processing and 3D visualisation have been introduced. It allows to easily process, analyse and inspect data from dense array radar systems. IQMaps provides a step by step approach to guide the user in performing the best and the quickest data analysis with the help of a customisable processing and analysis tool, both for skilled and not skilled users for utility mapping of large size projects, archaeological and environmental surveys.

IQMaps is available for Stream UP, Stream DP, Stream X, Opera Duo and RIS MF Hi-Mod.



3D view, high responsiveness, tailored user interface for an immersive analysis of underground data



Smart target management enable to easily extract underground features and increase productivity

IQMAPS MAIN FEATURES

- Ease of use and productivity have been dramatically increased (up to 20.000 sqm in a working day)
- Real-time processing and 3D immersive visualisation
- Responsive and intuitive interface with big amount of data

IQMAPS BENEFITS

- An immersive reality during post-processing phase
- No limit in software use even for acquisition of large areas
- Data Processing from all Stream family solutions
- Export, store, share and access data through major Cloud service providers

AiMaps FOR IQMAPS

Ai.Maps is a **deep learning** solution for IQMaps exploiting Hexagon's advanced **HxDR platform** for reality capture. Ai.Maps is a valuable **SaaS solution** running **intelligent data processing on cloud** for a resulting **enhanced tomography** maximizing your underground utility detection capability.