

C-thru

The all-in-one GPR with dual polarization for in-depth inspections in one scan.



Make concrete inspection and data collection **fast and simple**: full target detection with maximum data accuracy

IDS GeoRadar: The leader in multi-frequency and multi-channel Ground Penetrating Radar

www.idsgeoradar.com

C-thrue

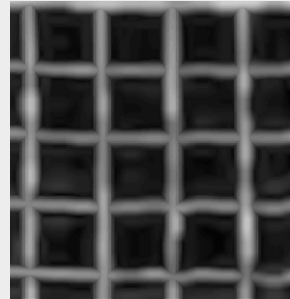
The all-in-one GPR with dual polarization for in-depth inspections in one scan.

C-thrue is the all-in-one portable dual polarized GPR system for a safe, complete and easy concrete inspection. This device allows to quickly see through concrete structures and reveal true data leading to optimal decision making when it comes to drilling or cutting. C-thrue detects shallow and deep targets in one swath providing accurate scanning and real-time analysis of concrete structures for an in-depth inspection.

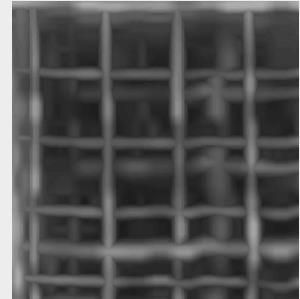
DUAL ANTENNA POLARIZATION: DETECT SHALLOW AND DEEPER TARGETS IN A SINGLE MOVE.

The dual polarization mode makes concrete inspection fast and simple with the most accurate scanning performance to easily locate and identify rebars, ducts, cables and other objects.

While other devices without dual polarization require to scan the inspection area twice to get the big picture, C-thrue - thanks to its dual polarized antenna - allows the detection of both first and deeper levels of rebars in a single swath.



Standard GPR visualisation



C-thrue visualisation



MAXIMIZED DETECTION FOR UNMATCHED PRODUCTIVITY

C-thrue leverages dual polarization technology to display both HH and VV channels in a single action. Increasing confidence in data interpretation, C-thrue provides the highest quality data with the most accurate real-time results while also saving time for data collection.



IMPROVED DECISION-MAKING: SIMPLIFIED DATA INTERPRETATION

C-thrue allows clearer and faster surveys with its automatic data acquisition and analysis: the automatic position and navigation system eliminates all manual, error-prone paper grids. Additionally, augmented reality features for 3D data visualization, improve the user's experience in better understanding target areas.



FLEXIBILITY ACROSS ENVIRONMENTS TO MATCH YOUR DIFFERENT NEEDS

C-thrue is compact, lightweight, drop resistant and transportable. This device offers a top level performance across different indoor and outdoor concrete inspection scenarios. Designed with an eye on ergonomics, you can switch between the handle and the telescopic pole in challenging environments.



Real-time investigation of concrete structures is fast and simple with C-thrue: visualize on-site results directly on the multi-touch display.



C-thrue's augmented reality features offer users an immersive experience in data visualization besides traditional one.

Integrated use of C-thru and C-thru XS

C-thru can be used in combination with C-thru XS, the smallest and lightest concrete scanning antenna on the market, to easily inspect constricted and hard to reach spaces: such as corners, pillars and areas around obstructions.

The integrated use of C-thru and C-thru XS represents the comprehensive solution able to cover all jobsite challenges in real-time concrete inspection.



To survey hard to reach areas, C-thru can be connected to the C-thru XS device and easily reach inaccessible spots.

DUAL POLARISATION

- Detection of both first and deeper levels
- Collection of accurate data in one move
- Saves time and maximises productivity

SYSTEM SPECIFICATIONS

- Sensor frequency: 2.0 GHz
- Polarization: Configuration HH and VV
- Depth range: 0-100 cm (0-40 in.)
- Connectivity: LAN to Remote control / C-thru
- Display modes: B-Scan and C-scan
- Positioning system: Virtual Pad
- Size: 28.5x20x16 (cm) - 11.2x8.6x6.3 (in.)
- Weight: 2.4 kg (5 lb) with battery
- Battery: Li-ion battery, 15V, 3.2Ah
- Max operating time: 3-hour runtime
- Environmental: IP65
- Compliant with: CE, FCC, IC

ACCESSORIES

- C-thru External Controller
- C-thru Handle: Telescoping pole



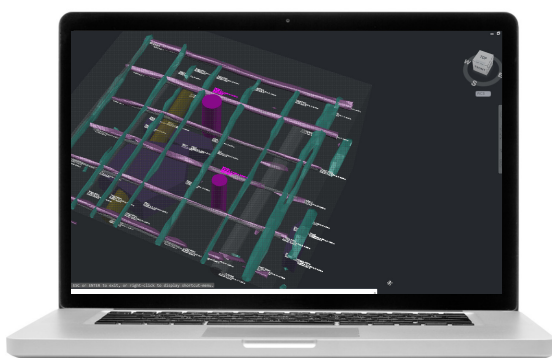
NDT Reveal

NDT Reveal is a desktop software to organize and share GPR data collected with C-thru and C-thru XS. This CAD based software is able to provide a complete data analysis and reporting for jobsite surveys.

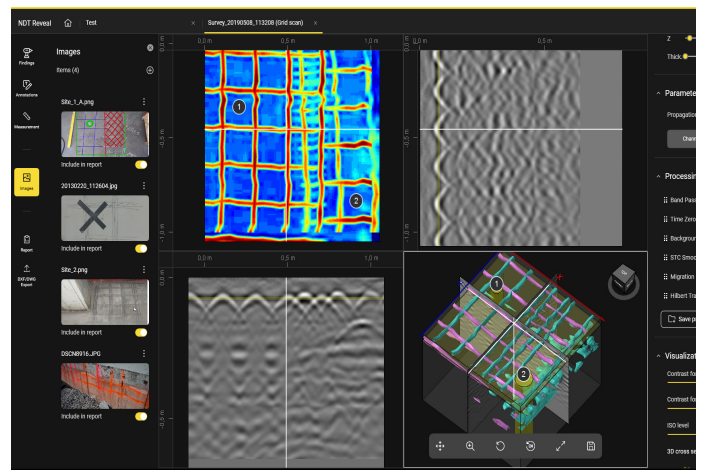
With NDT Reveal users can attach their jobsite surveys directly to their CAD drawing to seamlessly organize and manage complex Building and Construction projects.

NDT Reveal software allows users to:

- Display the 2D and 3D GPR data, manage and store all the detected features
- Create and share digital exports (DXF and DWG format) and job site reports (on-site photos, sketches, CSV)



NDT Reveal optimizes the office workflow by using a single software suite for both GPR data analysis and reporting





IDS GeoRadar

IDS GeoRadar, part of Hexagon, provides products and solutions, based on radar technology, for mining, civil engineering and monitoring applications. The company is a leading provider of Ground Penetrating Radar (GPR) and Interferometric Radar solutions worldwide.

IDS GeoRadar is committed to delivering best-in-class performance solutions and to the pursuit of product excellence, through the creation of application-specific, innovative and cost-efficient systems for a wide range of applications including mining, utility detection and mapping, civil engineering, geology, archaeology and public safety.

Hexagon (Nasdaq Stockholm: HEXA B) has approximately 23,000 employees in 50 countries and net sales of approximately 4.3bn EUR.

Learn more at hexagon.com and follow us @HexagonAB.

IDS GeoRadar Srl
idsgeoradar.com

Via Augusto Righi 6, 6A, 8, 56121 Pisa (PI) Italy
Tel. +39 050 098 9300
salesdept@idsgeoradar.com

Follow us on:



[linkedin.com/company/ids-georadar](https://www.linkedin.com/company/ids-georadar)